



API MARINE

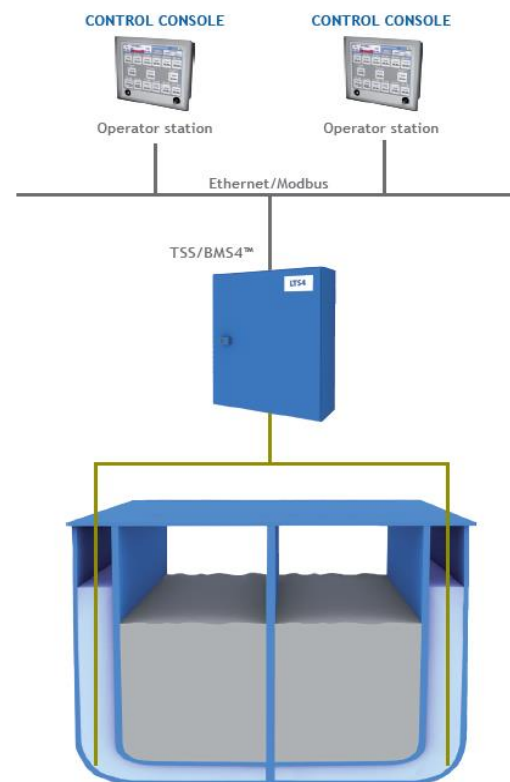
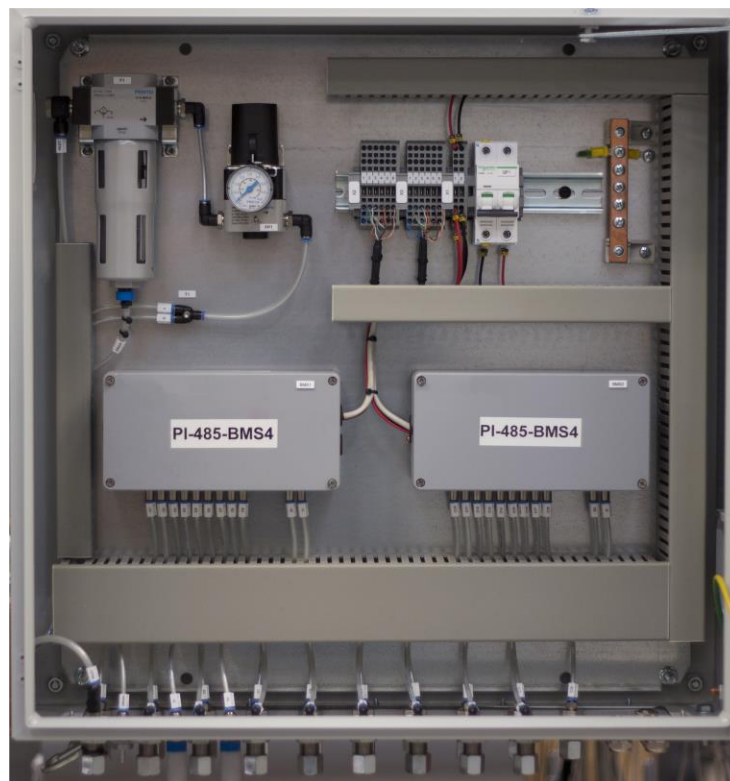
BMS4

**REMOTE SOUNDING SYSTEM FOR
BALLAST AND SERVICE TANKS**

SENSORS & AUTOMATION SYSTEM · POWER GENERATION · DIGITAL SOLUTIONS

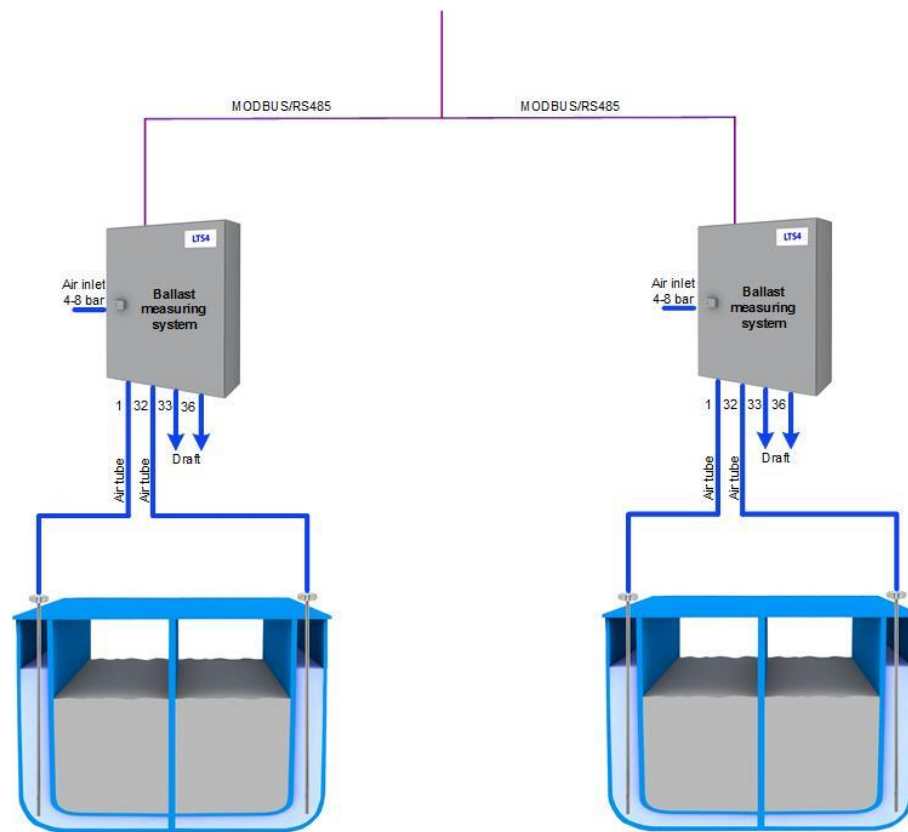
Remote Sounding System

TSS / BMS4™



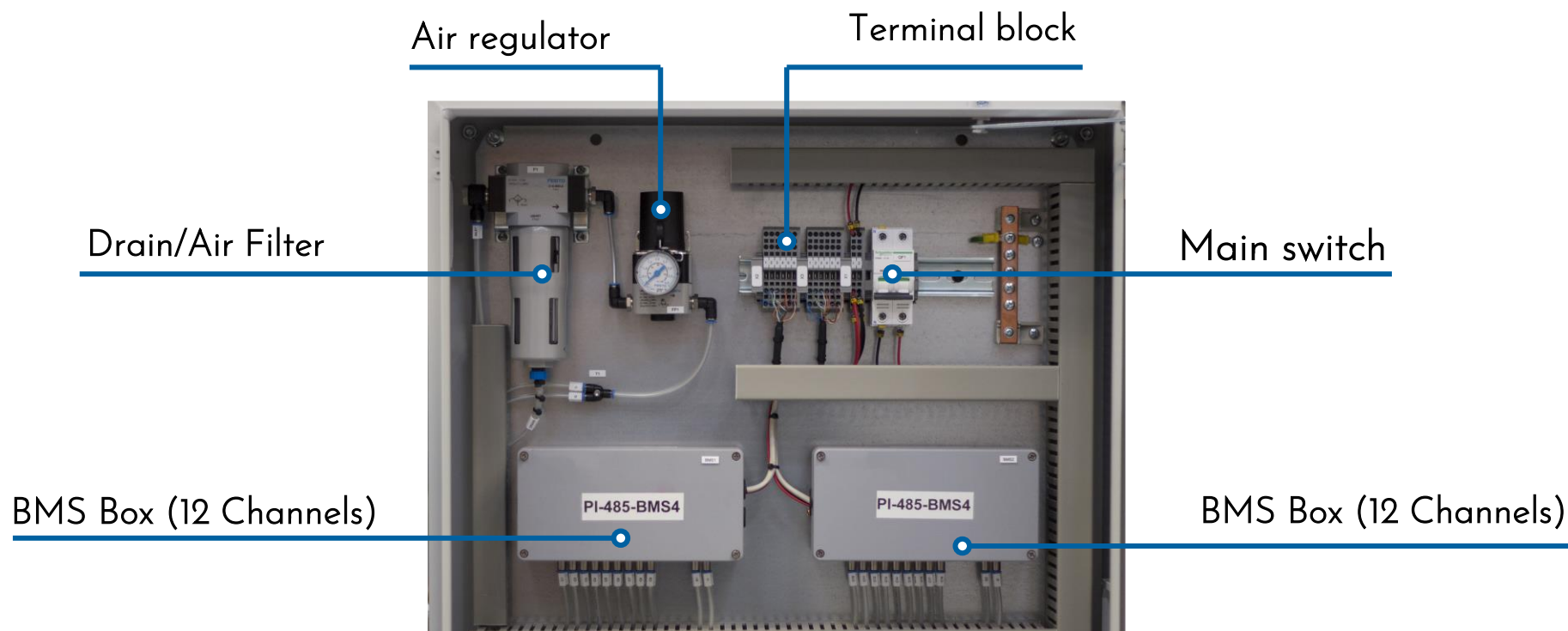
Typical Configuration

BMS4™



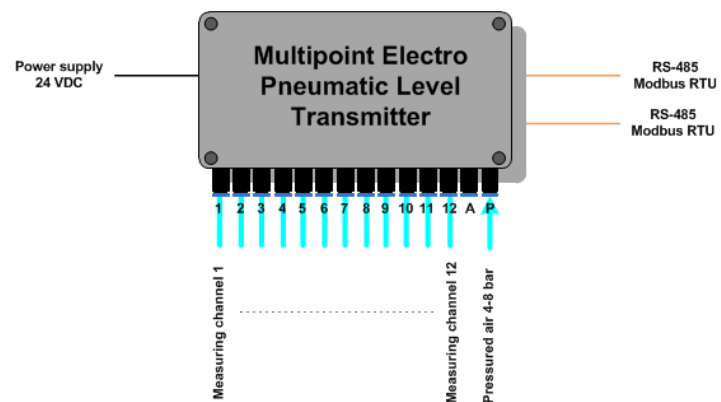
BMS4™ System (24 Tanks)

BMS4™



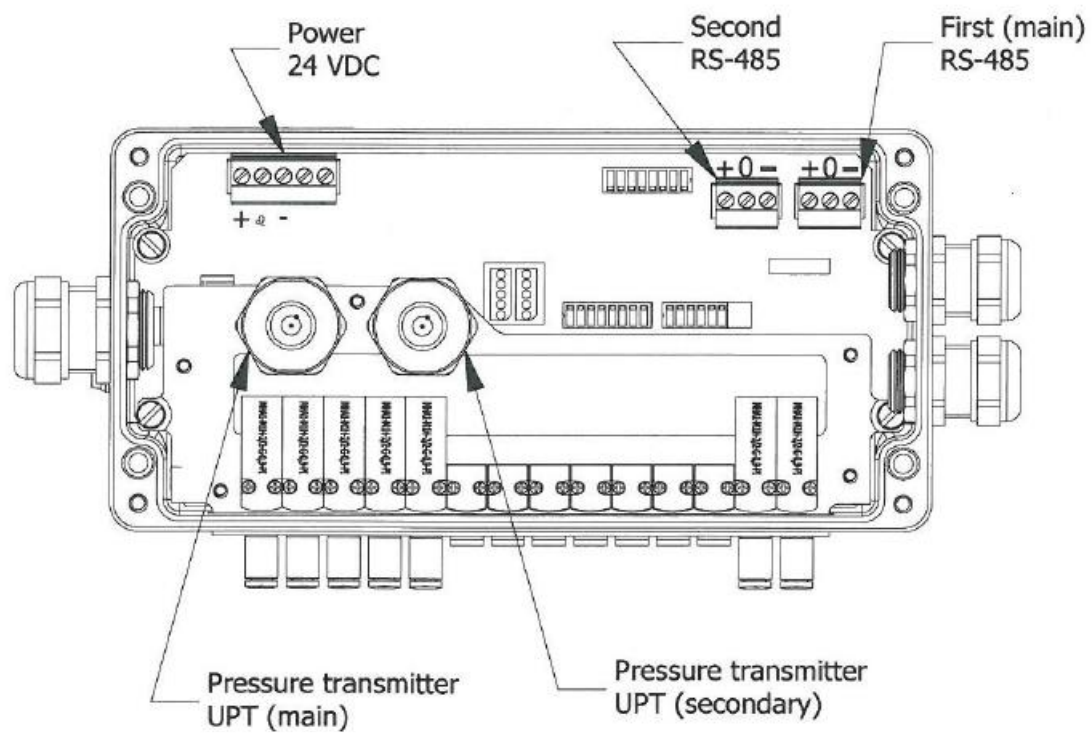
BMS4™ Overview

BMS4™



BMS4™ Overview

BMS4™





Remote Sounding System - Features and Functions

WWW.API-MARINE.COM

TSS / BMS4™

- Electro Pneumatic level and draft measurement system suitable for all types of vessels
- Compact and fully integrated system
- Competitive pricing / low investment cost
- Flexible and modular concept and design
- Standard configurations 12, 24, 36 and 48 channels



Remote Sounding System - Features and Functions

WWW.API-MARINE.COM

TSS / BMS4™

- Low air consumption & less dependant on air quality
- Automatic calibration of sensor during operation
- No electrical parts in Ex zone
- Intelligent scanning feature
- Easy installation

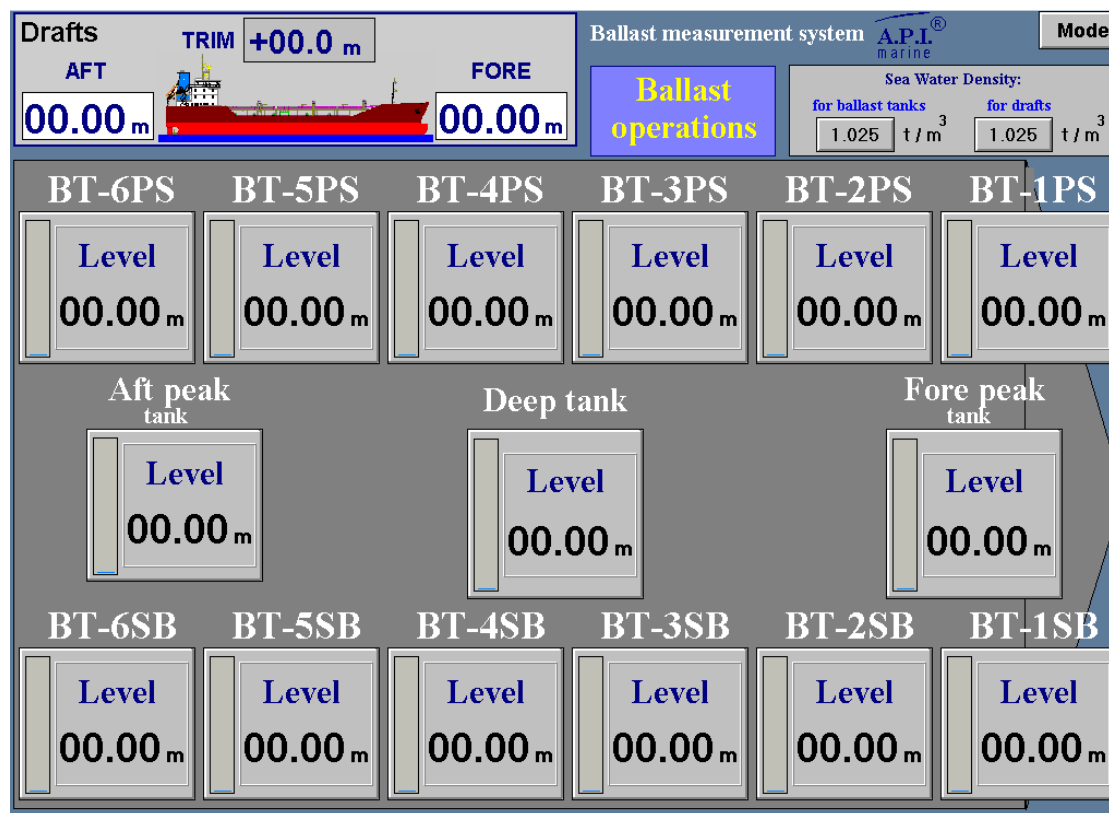


Remote Sounding System - Features and Functions

WWW.API-MARINE.COM

TSS / BMS4™

- Standard RS485 MODBUS output / easy interfacing
- Automatic cleaning (purging) of pipes
- Reliable and proven system
- Virtually maintenance free
- Ideal for retrofit installations
- Can easily be adapted to existing / onboard installations



Installation Aspects

BMS4™



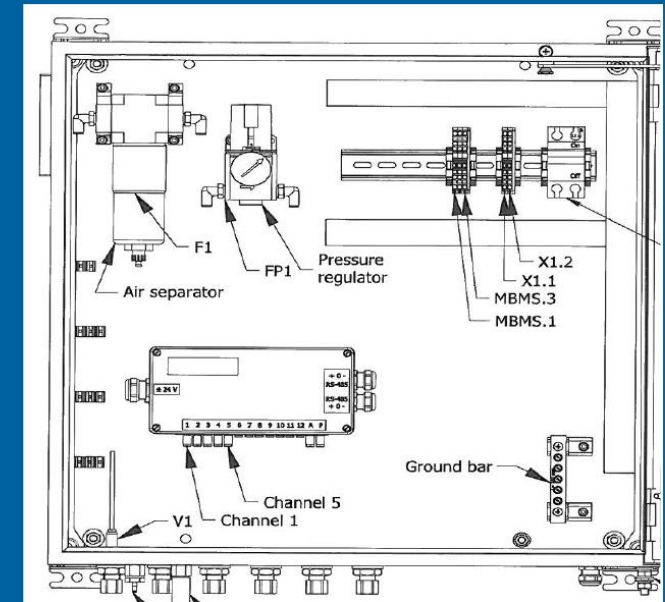
- Designed for installation on ship
- Cabling, mounting etc.
- Easy installation



BMS4™ System

System consisting of Local Technological Station LTS4 (for wall mounting)

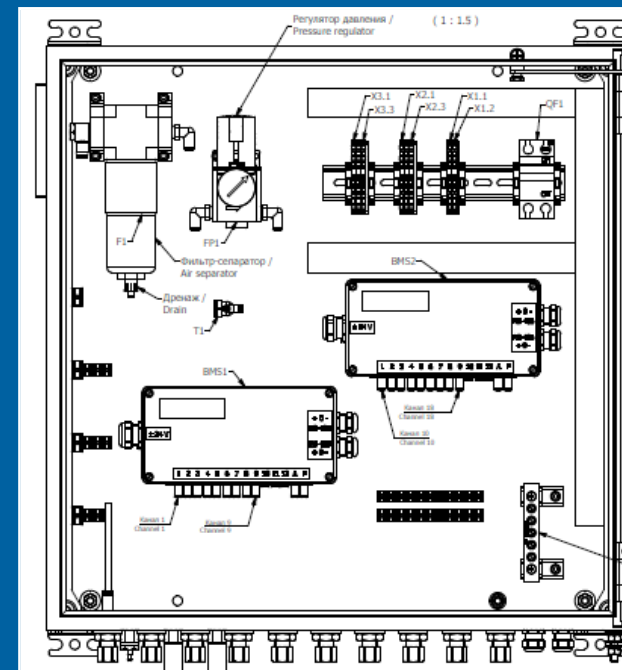
- BMS4 Module with 1-12 Measuring channels (1 pc)
- Air Separator Unit
- Pressure Regulator Unit
- Measurement error: <0.25% of the max. value of the measuring range
- Power supply: 24 VDC.
- Output: Modbus RTU, RS485 2-wires
- Pneumatic connection: 10mm x 1mm stainless steel tubing
- Filter and pressure reducer with manometer is provided for air inlet.
- Shut-off valve for air supply.
- Low pressure alarm switch (NC).
- Atmospheric correction for pressure sensors.
- Air pressure injected in cabinet: 4-8 bar.
- Automatic system calibration
- Working air pressure less than 2 bar
- Cabinet dimensions: 600x600x210mm.
- Manuals and documentation.
- Standard Spares and tools



BMS4™ System

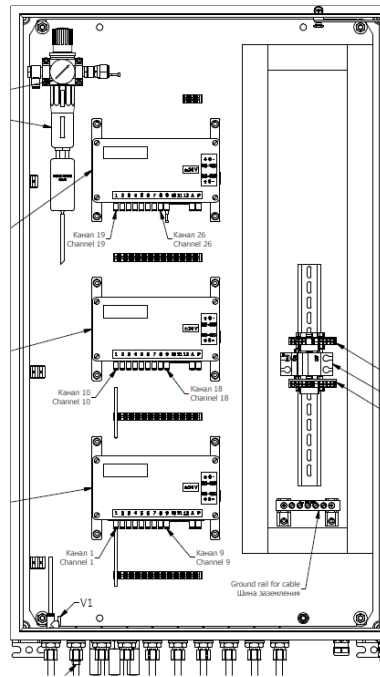
System consisting of Local Technological Station LTS4 (for wall mounting)

- BMS4 Module with 1-24 Measuring channels (2 pc)
- Air Separator Unit
- Pressure Regulator Unit
- Measurement error: <0.25% of the max. value of the measuring range
- Power supply: 24 VDC.
- Output: Modbus RTU, RS485 2-wires
- Pneumatic connection: 10mm x 1mm stainless steel tubing
- Filter and pressure reducer with manometer is provided for air inlet.
- Shut-off valve for air supply.
- Low pressure alarm switch (NC).
- Atmospheric correction for pressure sensors.
- Air pressure injected in cabinet: 4-8 bar.
- Automatic system calibration
- Working air pressure less than 2 bar
- Cabinet dimensions: 600x600x210mm.
- Manuals and documentation.
- Standard Spares and tools

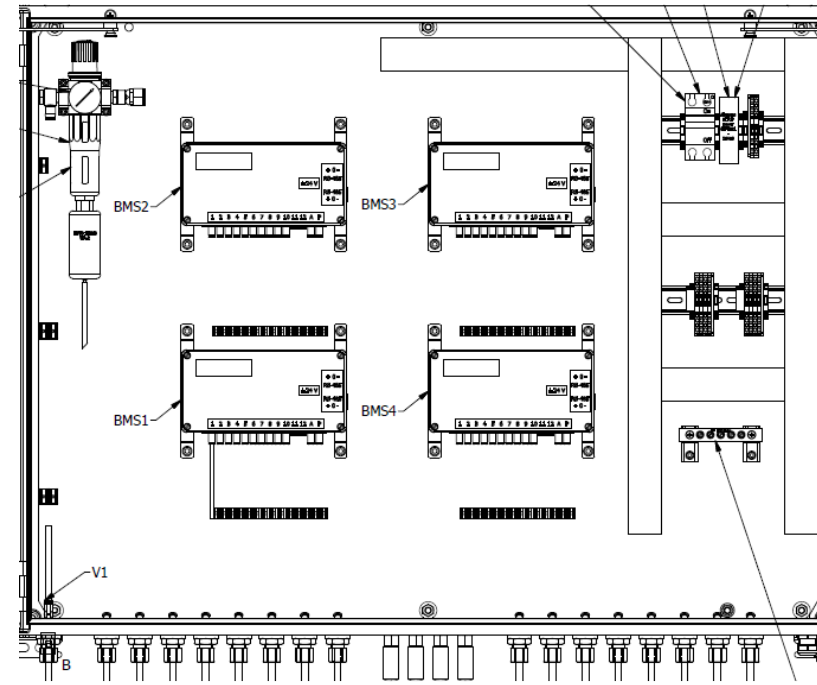


Scope of Supply (1-36 and 1-48 Tanks)

BMS4™ System



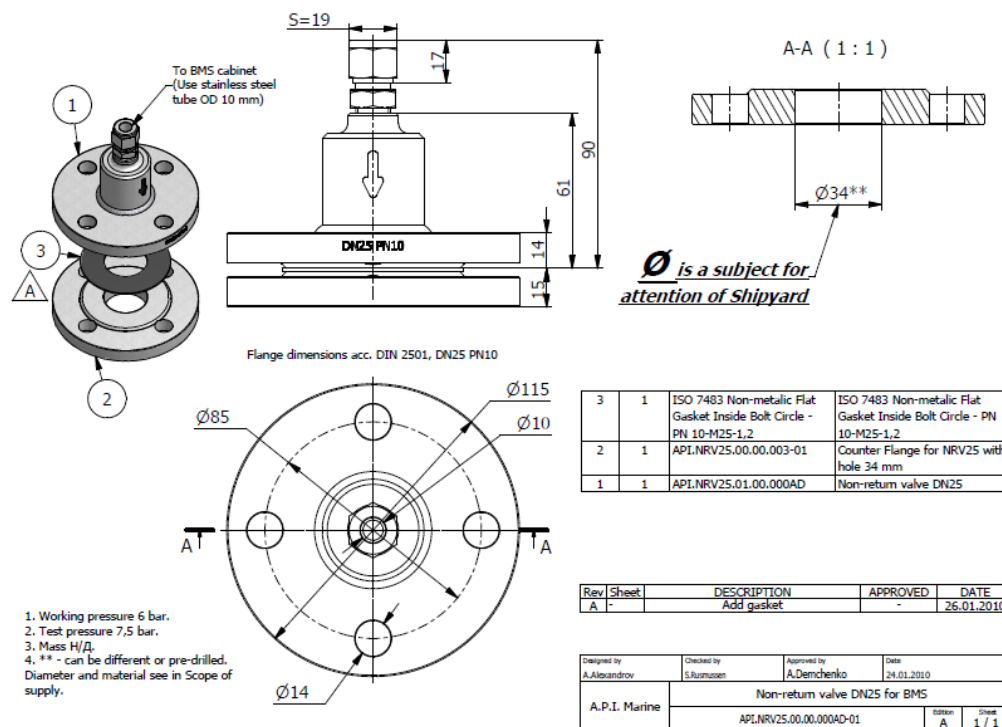
BMS4 System (1-36 Tanks)



BMS4 System (1-48 Tanks)

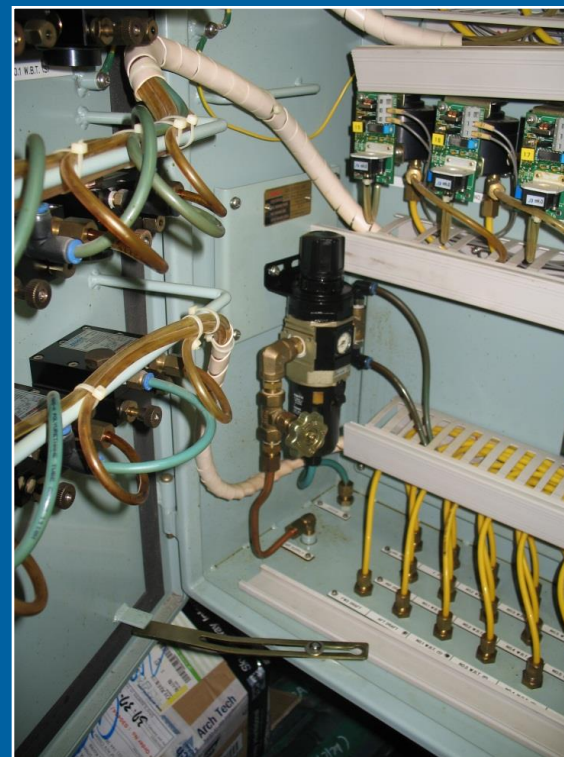
Non Return Valve

BMS4™



BMS4™

- Possibility to replace existing older systems
- Tubes, connections etc. may be kept as is
- Easy and cost effective installation



Summary and Highlights

BMS4™

- Competitive price and low investment cost
- Compact and modular design
- Low maintenance cost
- Easy installation



SETTING NEW STANDARDS FOR TANK MEASUREMENT TECHNOLOGIES



**PRECISE, ECO-FRIENDLY AND SECURE
SOLUTIONS AT SEA**

SENSORS & AUTOMATION SYSTEM · POWER GENERATION · DIGITAL SOLUTIONS